

AXIS Q1910/-E

Thermal Network Cameras

Reliable detection in dark and challenging conditions



AXIS Q1910/-E Thermal Network Cameras



Reliable detection in dark and challenging conditions

24/7 detection in challenging conditions

- > Detection in dark

- No energy consuming floodlights

- > Detection in difficult daylight conditions

- Bright light
- Shadows

- > Other challenging conditions:

- Rain
- Snow
- Haze
- Smoke



AXIS Q1910/-E – affordable 24/7 detection

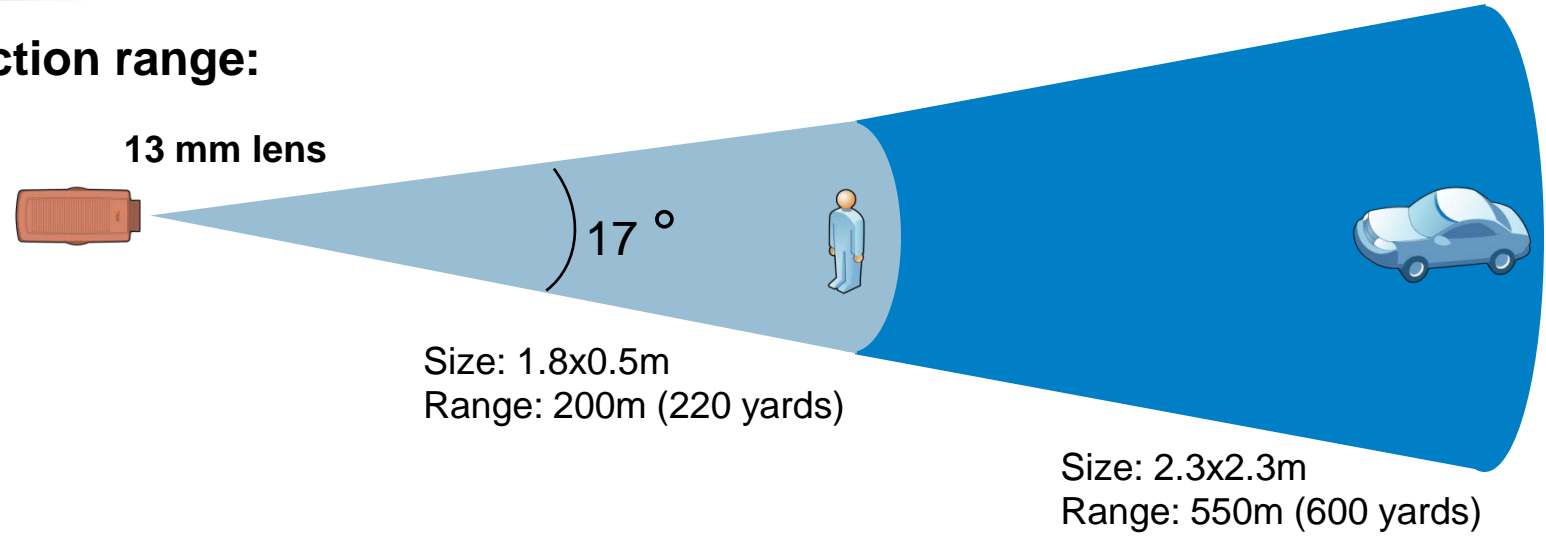
Indoor : AXIS Q1910



Outdoor: AXIS Q1910-E



Detection range:



A perfect complement adding value to your system

Network
cameras



1920x1080 @ 30 fps

Thermal
network
cameras

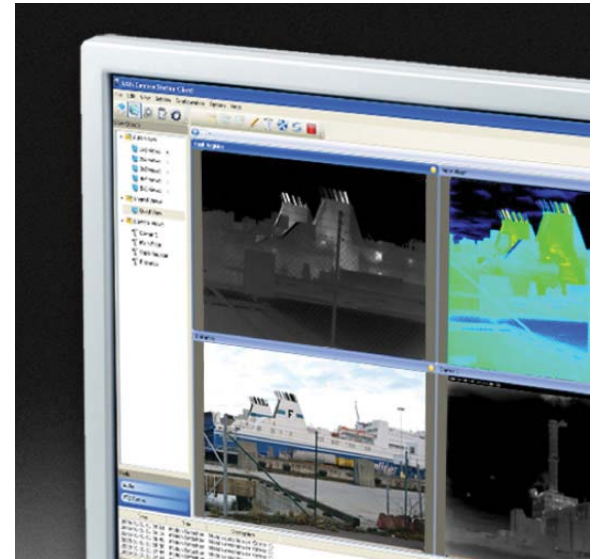


160x128 @ 9 fps

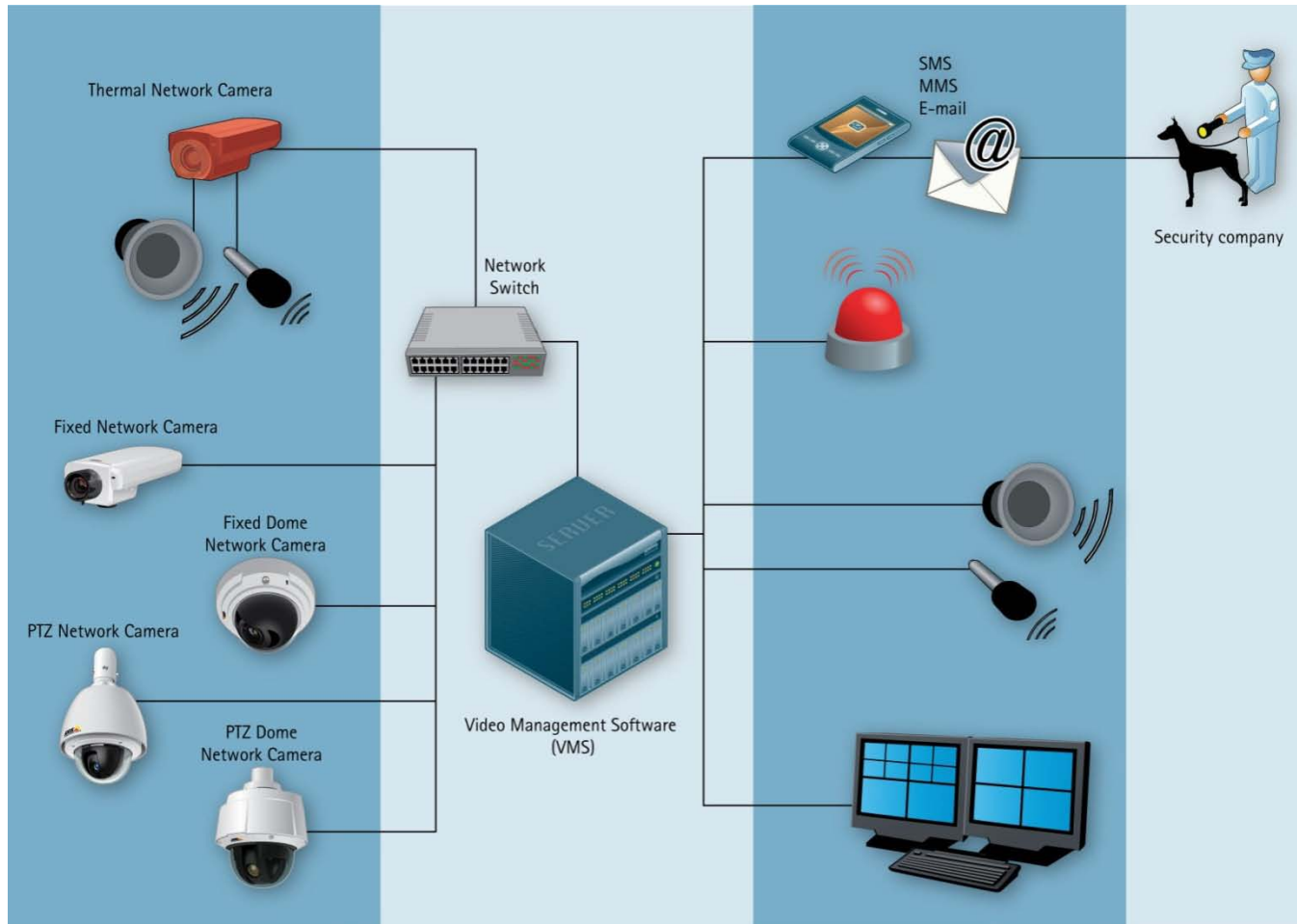
Identification	★★★★★	★
Detection at daylight	★★★★	★★★★★
Detection at night	★★	★★★★★
Detection in difficult conditions	★★★	★★★★

Benefit from Axis's proven key strengths

- > Ease of integration
 - Existing IP infrastructure can be used
 - Power over Ethernet (IEEE 802.3af) – no need for separate power cables
- > Optimization of storage and bandwidth efficiency
 - H.264 compression
 - Outstanding video streaming performance
 - Multiple video streams in H.264 and Motion JPEG
- > Access to the market's widest range of software solutions:
 - Third-party software solutions from Axis' Application Development Partners
 - AXIS Camera Station
 - AXIS Camera Application Platform

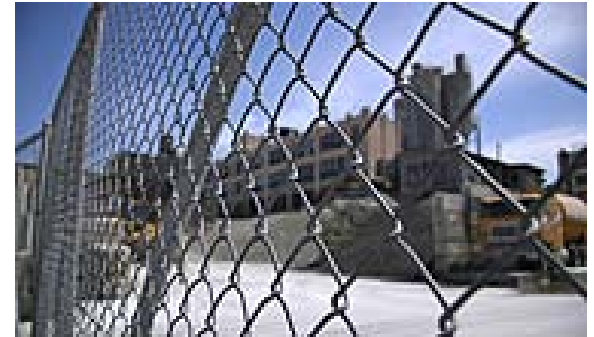


Thermal network cameras as part of a complete system



AXIS Q1910/-E security & surveillance application areas

- > Perimeter and area protection
- > People detection for safety and security
 - Building security & emergency management
- > Expanding existing video surveillance installations and video analytic capabilities

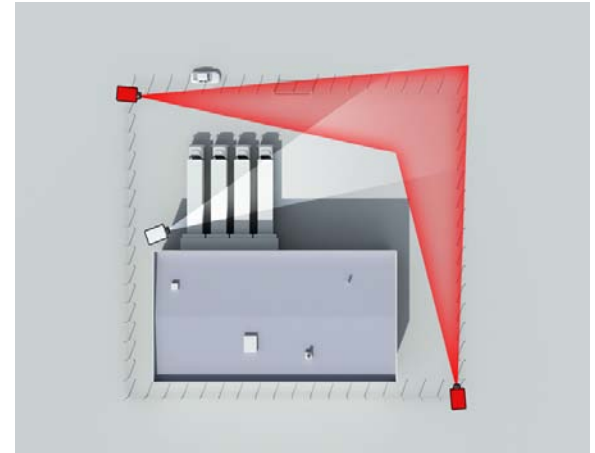


Use case #1 – Perimeter protection

An invisible thermal fence provides discreet and cost-effective detection

Key drivers

- > Powerful and cost-effective alternative to radio frequency intruder detection, electrified fences, CCTV/flood lights, etc.
 - Strengthens/augments physical fences
 - No IR illumination needed
 - Discreet - No light pollution



Typical applications

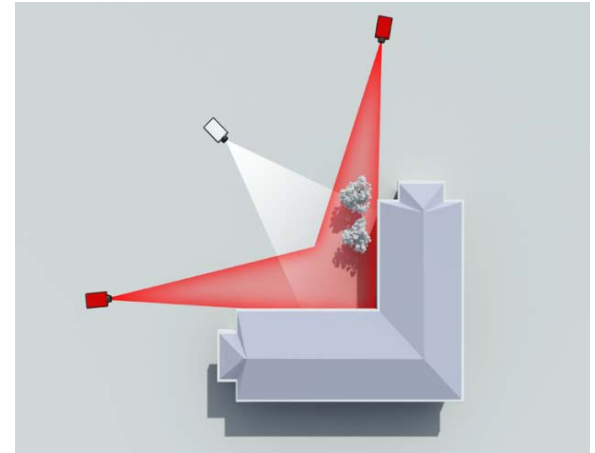
- > Ports and marinas
- > Power plants
- > Utilities
- > Prisons

Use case #2 – Area protection

Effective area protection gives cost-effective security

Key drivers

- > Thermal detection at outdoor locations triggers front line response to intruders, thereby helping minimize:
 - Vandalism
 - Burglary
 - False alarms



Typical applications

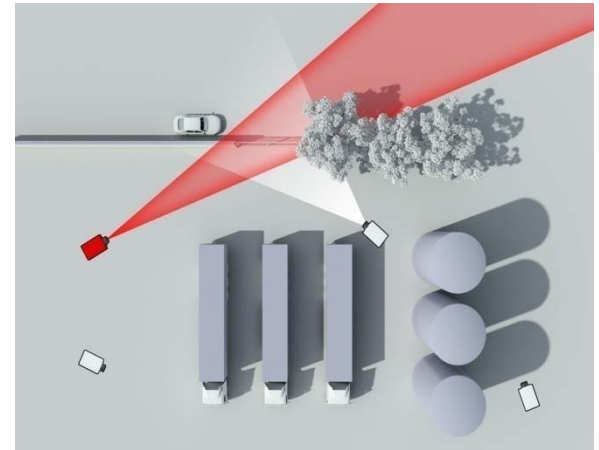
- > Parking lots
- > Schools and campuses
- > High-security premises
- > Loading docks

Use case #3 – Intelligent video applications

Detection of thermal radiation gives higher accuracy than conventional cameras in most intelligent video applications

Key drivers

- > Reliable front-end for video analytics
not sensitive to shadows, light and complex views
- > Reduction of false triggers
- > More effective analysis of recorded material



Typical applications

- > Entrances
- > Checkpoints
- > Building security

Use case #4 – Building security & emergency mgmt.

Detecting human presence indoors, after business hours or during emergencies

Key drivers

- > Quickly detecting human presence and incidents at indoor locations reduces or prevents:
 - People hiding in the building after closing time
 - Fire
 - Riots
 - False alarms



Typical applications

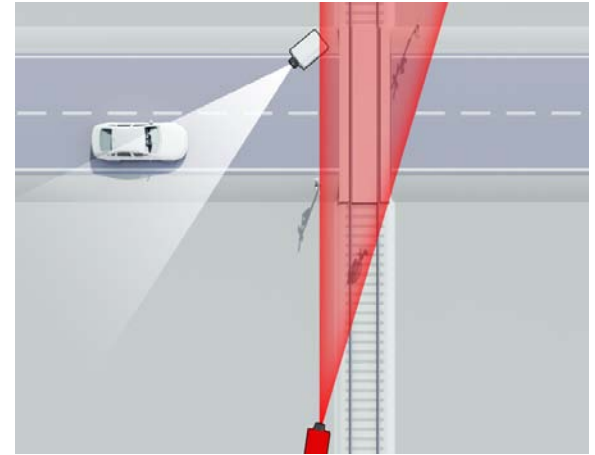
- > Retail stores
- > Office buildings
- > Prisons
- > Warehouses

Use case #5 – People detection for safety & security

Detecting human presence in dangerous or off-limits areas enables fast remedial action

Key drivers

- > Detection enhances safety and security in potentially dangerous environments:
 - Reduces accident risk and potential loss of life
 - Prevents vandalism and crime



Typical applications

- > Tunnels
- > Railway tracks/platforms
- > Bridges
- > Crossroads

AXIS Q1910-E – Out-of-the box outdoor detection

An out-of-the box ready thermal camera designed to withstand harsh indoor and outdoor environments

- > Can be used in a wide temperature range
-40°C to 50°C (-40°F to 122°F)
 - Integrated window heater
- > Dustproof and protected against strong water jets
 - IP66
- > Powered by standard PoE
 - IEEE 802.3af



AXIS Q1910/-E – Meeting your system needs

> Security

- Active Tampering Alarm detects camera tampering attempts
- Highest degree of network security, including HTTPS encrypted video streams, IEEE 802.1.x authentication, QoS and IPv6 support

> Intelligent video capabilities

- Motion detection to save recording space by trigger an alarm only when someone is entering the monitored area
- Capacity for third party analytics modules and support for AXIS Camera Application Platform.
- ONVIF support for interoperability

> Two-way audio capabilities

- Remote communication with visitors or intruders



AXIS Q1910/-E – Color palette streaming

Customized color live views for enhancement of detection possibilities

- > 10 predefined color palettes to meet your personal preference
- > Streaming of up to 4 different palettes at the same time



AXIS Q1910/-E – Easy installation & efficient operation

> Flexible power supply

- Power over Ethernet (PoE) supplies power to the camera via the network
- 12/24V AC/DC Power connection (terminal block)

> Less bandwidth and storage needed

- H.264 can reduce storage and bandwidth demands with up to 80%, Motion JPEG is also supported
- Built-in slot for SD/SDHC card enables local storage of up to 32 GB
 - Several weeks of recordings without any external equipment



AXIS Q1910/-E – Accessories

Various accessories allow you to further improve your Axis thermal network camera installation

- > YP 3040 Pan/Tilt Motor
- > Software
 - > AXIS Camera Station
 - > AXIS Cross Line Detection



Thank you!

